



POWER SENSE

OPEN THE WAY, EVERYDAY



POWER ECO

SIDE GARAGE DOOR OPENER



- With aluminum coil
- It has receiver and two transmitters
- It has 4 limit switches
- Inclusive manual key

Model	Rotating (rpm)	Maximum lift height (m)	power (W)	Protection index (IP)	Rated Voltage
AC300	5	6	180	IP44	220
AC600	5	6	300	IP44	220
AC800	5	6	400	IP44	220

1 YEAR WARRANTY



POWER ECO

SIDE GARAGE DOOR OPENER



- With 100% copper winding
- Auto-close system
- It has 4 limit switches
- with UPS (backup power)
- Inclusive manual key

Model	Rotating (rpm)	Maximum lift height (m)	power (W)	Protection index (IP)	Rated Voltage
DC300	4/8	6	200	IP44	24
DC500	4/8	6	240	IP44	24

1 YEAR WARRANTY



POWER PRO



SIDE GARAGE DOOR OPENER



- With 100% copper winding
- Auto close system
- It has 4 limit switches and 4 meter metal chain
- High thickness metal bracket
- Full functional control panel

Model	Rotating (rpm)	Maximum lift height (m)	power (W)	Protection index (IP)	Rated Voltage
AC300	5	6	250	IP44	220
AC600	5	6	370	IP44	220
AC1000	5	8	570	IP44	220

2 YEARS WARRANTY



POWER PRO



SIDE GARAGE DOOR OPENER



- With 100% copper winding
- Auto close system
- It has 2 limit switches and 8 meter metal chain
- High thickness metal bracket
- Full functional control panel
- Fire proof

Model	Rotating (rpm)	Maximum lift height (m)	power (W)	Protection index (IP)	Rated Voltage
AC600	5	6	370	IP44	380

2 YEARS WARRANTY



POWER PRO

SIDE GARAGE DOOR OPENER



- With 100% copper winding
- Auto close system
- It has 2 limit switches and 8 meter metal chain
- High thickness metal bracket
- Full functional control panel
- Fire proof

Model	Rotating (rpm)	Maximum lift height (m)	power (W)	Protection index (IP)	Rated Voltage
AC1500	5	9	550	IP44	380

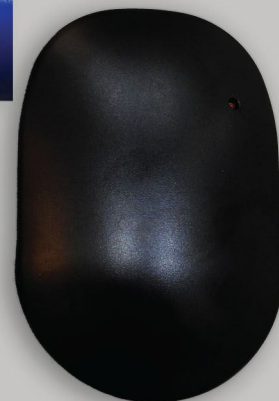
2 YEARS WARRANTY



POWER



TUBULAR DOOR OPENER



- Single-phase electric motor
- Inclusive release handle
- Low-noise
- CE and TUV certification

Torque (N.M)	Rotating (rpm)	power (W)	Maximum lift height (m)	Rated Voltage
100 N	12	365	6	230
120 N	12	380	6	230
140 N	12	395	6	230
160 N	9	410	6	230

1 YEAR WARRANTY



POWER



TUBULAR DOOR OPENER



- Efficient door opener
- Single-phase electric motor
- Rotating speed 12 rpm

Torque (N.M)	Rotating (rpm)	power (W)	Maximum lift height (m)	Rated Voltage
230kg	12	830	4	230

1 YEAR WARRANTY



INFINITY

GATE OPENER



- AC/DC motor with built in control panel.
- Built in manual override with 2 supplied unique override keys in case of emergency or power failure.
- All metal gears make it durable and long lasting.
- Soft start and soft stop.
- Resistance sensitivity and auto-closing delay time adjustable .
- Stop/Reverse in case of obstruction during gate opening /closing.
- Reliable mechanical spring limit or magnetic limit optional.
- Aluminium alloy base make it available for all kinds of bad weather .
- Back up battery and solar system are available for DC sliding.

3 YEARS WARRANTY



POWER

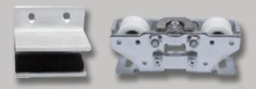
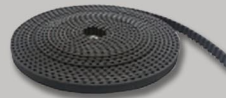
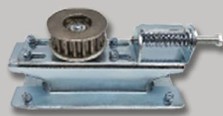
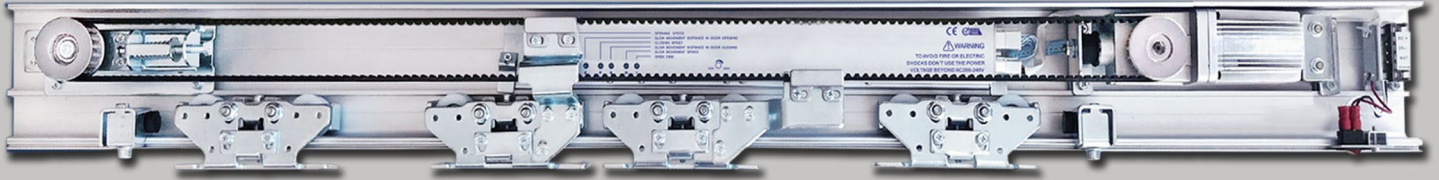
SECTIONAL GARAGE DOOR OPENER



- ELECTRONIC LIMIT SWITCH
- SAFETY OBSTACLE REVERSE
- SELF-LEARNING OPENING FORCE , AND SELF LEARNING CLOSING FORCE
- SELF-CLOSING FEATURE
- LOW-VOLTAGE PROTECTION
- CAN BE WITH INFRARED SENSOR FOR PROTECTION
- CAN BE WITH BATTERY BACKUP
- CAN BE WITH WALL SWITCH
- CAN BE WITH EXTERNAL RECEIVER
- CAN BE WITH FLASH LIGHT
- CAN BE WITH PASS DOOR PROTECTION
- CAN BE WITH KEYPAD
- CAN BE WITH FINGER REMOTE
- CAN BE WITH MOBILE REMOTE

1 YEAR WARRANTY

Sliding Gate



Technical Data

Door form: single door / double door

Loading weight: $\leq 1 \times 150\text{kg}$ / $\leq 2 \times 125\text{kg}$

Door width: 750-1600mm/650-1250mm

Power supply: AC 110~220V $\pm 10\%$, 50/60Hz

Power consumption: 65W (125A), 50W (125B)

Opening speed: 150-460mm/S (adjustable)

Closing speed: 130-460mm/S (adjustable)

Open time: 0-8S (adjustable)

Manual force: <40N/ <50N

Temperature range: -20 ~ +50°C

Features

The microcomputer control system drives the motor and controls the door to operate in the set mode. Wide voltage power supply design, many interface such as double door interlock.

Adopting European motor and gearbox integration technology, the drive is strong, the operation is stable, the output power is improved, and it can adapt to the needs of larger doors.

Special lubrication measures, special deceleration mute wheel, professionally designed hanging parts and roller structure greatly reduce the running noise.

Every time there is a self-test procedure, the door will rebound when it encounters resistance, which fully guarantees the safety of the passers-by.

Suitable for office buildings, storefronts, banks, restaurants, hotels, shopping centers, laboratories, hospitals and other places.

3 YEARS WARRANTY

10

Swing Door



Technical Data

Max. door weight: 150kg

Max. door width: 1200mm

Max. torque: 165Nm

Unit weight: 5.5kg

Installation method: ground embedding

Running noise: <60dB

Electric lock output: DC12V NO / NC

Opening /Closing time: 6-12S

Opening range: 86°- 95°

Power supply : AC220V±10% , 50/60Hz

Rated power: 55W

Standby power: <2W

Working temperature: -20 ~ +50°C

Protection level: IP68

Unit size: 330 X116 X100 (mm)

Control box size: 215X205X60 (mm)

Features

The controller has display debugging interface, which is easy to operate and is equipped with various function ports such as electric lock and backup battery.

The BMC casing of the motor unit is injection Molded, DC motor is completely sealed for super waterproof, fire insulation, corrosion resistance.

The Max. load is 150KG, the optional DSW-3 unit can be opened 90 degrees or the DSW-3A unit can open the door 180 degrees (automatically sensing the passing direction of pedestrians, and opening the door with the pedestrian walking direction).

It is cold-resistant and high-temperature resistant and can work in -20°C-55°C environment.

Small size, waterproof, heavy load, easy construction, etc., can be used indoors and outdoors.

Swing Door slim



Technical Data

Door form: single door

Carrying weight: $\leq 1 \times 100\text{kg}$

Applicable door width: $\leq 1200\text{mm}$

Power supply voltage: AC220V $\pm 10\%$, 50/60Hz

Opening time: 3-7S/90° (adjustable)

Open time: 1-30S (adjustable)

Protection level: IP12D

Product weight (unit): 6.5kg

Unit size(DSW100): 520X95X82mm

Unit size(DSW100N): 540X95X82mm

Ambient temperature: -20 ~ +55°C

Features

The DSW100 drive unit operates with low noise, reliable performance and safe use, providing more convenience for living and working environments.

The DSW100N is a new upgraded transformer-less drive that offers a wider range of supply power voltages. Provides interfaces such as sensors, access control, and security sensor protection, and is equipped with interfaces for magnetic electric lock and backup battery too.

UPS power can be configured to meet security requirements. Both them can realize Interlocking function between door and door.

If touch obstacles or personnel in operation, the door will open in the opposite direction.

Applicable to office buildings, storefronts, banks, factories, restaurants, hotels, shopping centers, laboratories, hospitals and other places.



POWER

RECEIVER & TRANSMITTER

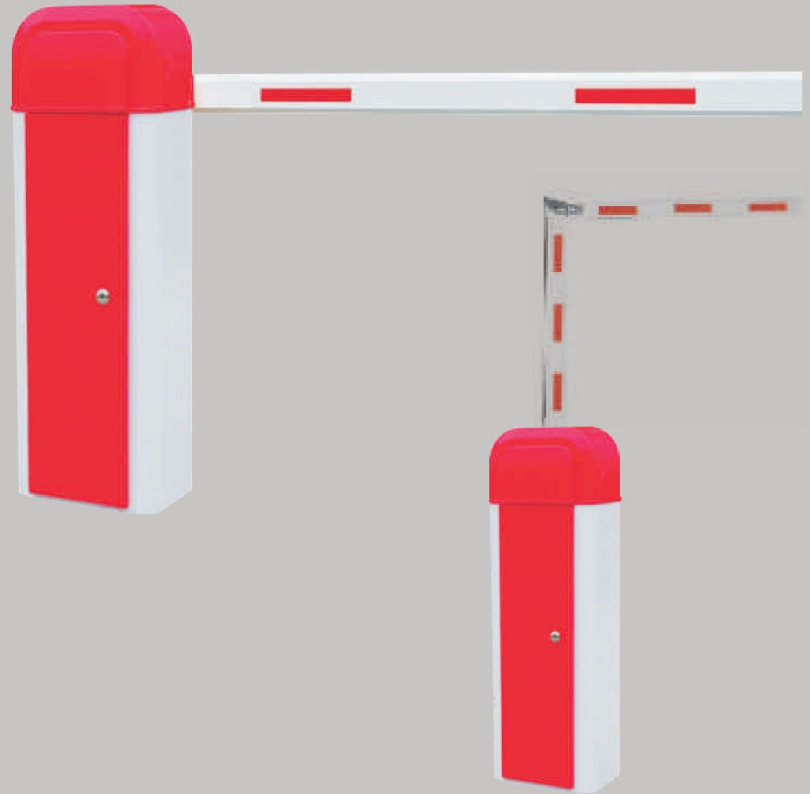


- In two models, full functional and simple
- Rated voltage 220 V
- Enable to connect with IR sensor and Flashlight in the full functional model
- Enable to connect with extra transmitter
- Auto- close function



INFINITY

AUTOMATIC BOOM BARRIER



Features:

- Easy installation and low maintenance.
- Auto pause if meet the enough resistance during opening.
- The barrier gate will close automatically When it opens to the position.
- Barrier gate motor open and close sensitivity is adjustable.
- Support to connect to 12V flashing light
- Loop detector funtion is supported.

1 YEAR WARRANTY



 **UNIT 1030, TAMANI BUILDING, BUSINESS BAY**

 **+97145764494**
+971563338664